

VIPER PROTECTIVE COATING WHITE

TECHNICAL DATASHEET

PRODUCT DESCRIPTION

This is a two-component, high quality polyurethane protective coating used for automotive, SUV, pickup, truck underbody, industrial surfaces, marine vehicles and more. It provides a matte, tough and durable finish with exceptional protective properties. VIPER Protective Coating Black and tintable are also available.

PRODUCT CHARACTERISTICS

1. Fast drying
2. Matt finish.
3. Exceptional mechanical and chemical resistance.
4. Excellent hardness and scratching resistance.
5. Excellent weather resistance and non-yellowing.
6. Excellent outdoor stability.
7. Excellent color retention properties.
8. Superior UV resistance.
9. Outstanding corrosion protection.
10. Easy to clean.

RECOMMENDED USE

Two-component polyurethane protective coating used for painting cars, special equipment, SUVs, pickups, marine vessels etc... to provide excellent protection against mechanical and chemical damage as well as extreme atmospheric conditions .



SURFACE PREPARATION

Surface types:

- | | |
|----------------------|--------------------------|
| • Original paint | • Polyester putties |
| • Aluminum* | • Most types of plastic* |
| • Bare metal* | • Fiberglass |
| • Galvanized steel* | • Concrete* |
| • Composite material | • E-coat* |
| • GRP plastics | • Wood* |

* Some surfaces require additional preparation before applying PROTECTIVE COATING. For more information, see below.

VIPER PROTECTIVE COATING WHITE

Wash the surface with water and soap.

Degrease with Degreaser 130 and wipe dry with a clean cloth.

Remove any loose old paint or rust from the surface.

Repair according to damage.

Sanding:

dry mechanical sanding with grit P80 – P180 depending on the surface.

wet sanding with grit P150 – P360

Degrease again with Degreaser 130 and wipe with a dry cloth.

*Aluminium, bare metal, galvanized steel:

Apply 2K epoxy primer or 2K Wash Primer to provide excellent adhesion and corrosion resistance.

*Hard plastic:

After sanding with P180 grit paper, clean and degrease the surface, then use Plastic primer.

*Wood:

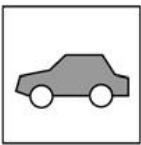
VIPER Protective Coating can be applied directly on wood surfaces after sanding with P180 grit paper.

*Concrete:

For optimal results, clean and remove dust from the surface. Before applying VIPER Protective Coating, apply a special primer for concrete to increase adhesion.

*E-coat:

Sand the surface with red Scotch Brite or P180/P320 grit paper, clean and degrease.



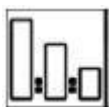
SPECIFICATIONS

Color: White (Black and Tintable are also available)

Density: 1.4 - 1.5 g/cm³

Solid content: 79-80 %

Coverage: about 2 - 12 m²/l depending on texture and layer thickness

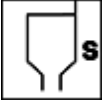


Mixing ratio: 3:1 (base: hardener)

Dilution: up to 30% with 2K Thinner to achieve the required spraying viscosity.

Pot life: 1 – 2 hours at 20°C.

VIPER PROTECTIVE COATING WHITE



Spray viscosity: 40 – 45 Poises

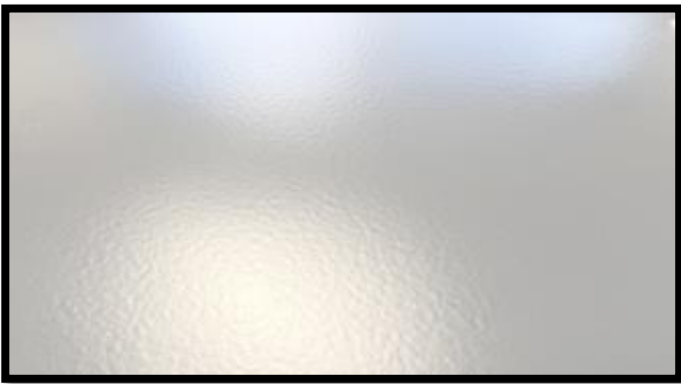


Number of Spray Layers: 2 – 3 layers

Layer thickness: 150 – 800 μm

TEXTURE APPLICATION OPTIONS:

Texture 1: Flat Matt

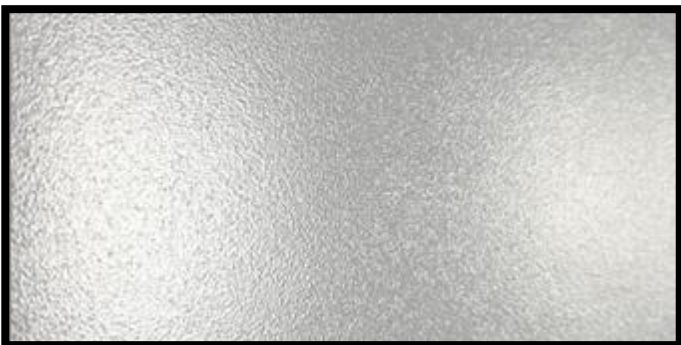


Thin up to 30% with 2K thinner to achieve optimal viscosity.

Apply 2 – 3 wet layers using HVLP or RP gun with a nozzle of 1.4 – 2.0 mm at a distance of 10 – 15 cm from the surface.

The pressure at the inlet to the gun is 1.8 - 2 bar. Flash off time between layers is 15 – 20 minutes.

Texture 2: Plastic



Thin up to 30% with 2K thinner to achieve optimal viscosity.

Apply 1 - 2 wet coats using HVLP or RP gun with a nozzle of 1.4 - 2.0 mm, at a distance of 10 – 15 cm from the surface.

Wait for 10 – 15 minutes and apply 1 effect layer at low pressure (0.5 – 0.7 bar). Distance from the surface: 10 - 15 cm.

VIPER PROTECTIVE COATING WHITE

Texture 3: Fine Plastic



Thin up to 30% with 2K thinner to achieve optimal viscosity.

Apply 1 - 2 wet coats using HVLP or RP gun with a nozzle of 1.4 - 2.0 mm, at a distance of 10 – 15 cm from the surface.

Wait for 20 - 30 minutes and apply 2 effect layers at medium pressure (1.0 - 1.4 bars), distance from the surface: 20 cm.

Texture 4: Medium



Apply 1 - 2 wet coats using HVLP or RP gun with a nozzle of 1.4 - 2.0 mm, at a distance of 10 – 15 cm from the surface.

Wait for 20 - 30 minutes and apply 2 effect layers from an anti-gravel gun at high pressure (4 - 5 bars), distance from the surface: 40 - 50 cm

Texture 5: Standard

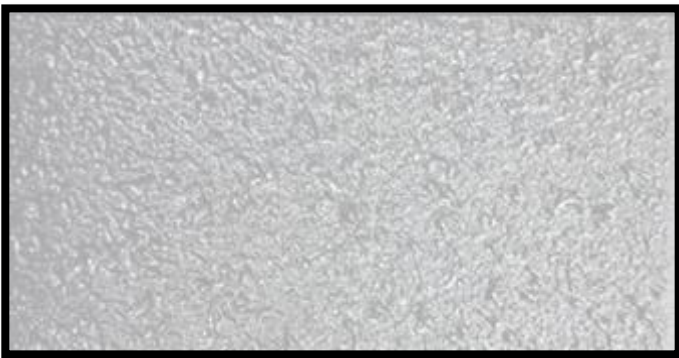


Apply 1 - 2 wet layers from an anti-gravel gun at a medium pressure of 2.5 - 3 bars at a distance of 20 - 30 cm from the surface.

Wait for 20 - 40 minutes and apply 1 - 2 effect layers from an anti-gravel gun at a medium pressure of 3 - 4 bars, distance from surface: 40 – 50 cm

VIPER PROTECTIVE COATING WHITE

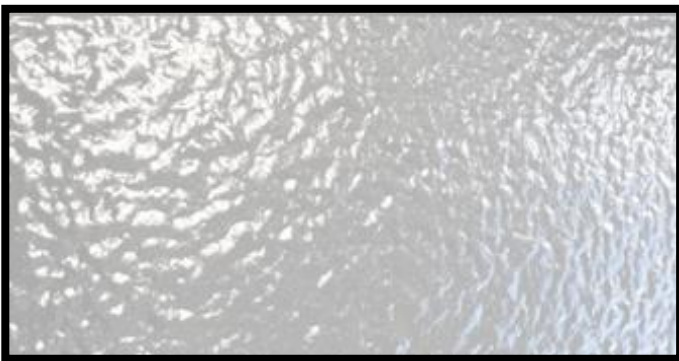
Texture 6: Rough



Apply 1 - 2 wet layers from an anti-gravel gun at a medium pressure of 2.5 - 3 bars at a distance of 20 - 30 cm from the surface.

Mix PROTECTIVE COATING with hardener. Wait for 20 - 30 minutes and apply 1 uniform layer with an anti-gravel gun at low pressure 1.5 - 2 bars, distance from the surface: 30 - 40 cm

Texture 7: Rough Wet

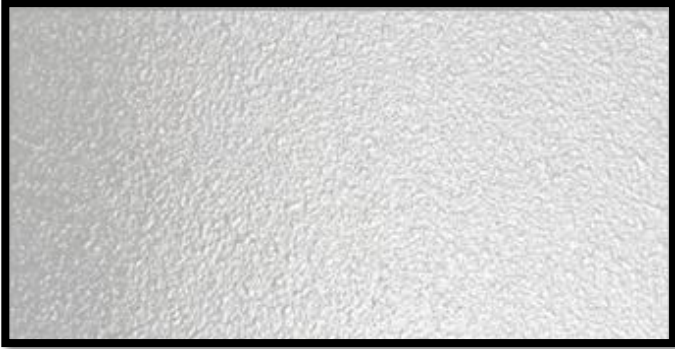


Apply 2 wet layers with an anti-gravel gun at a medium pressure of 2.5 - 3 bars, at a distance of 20 - 30 cm from the surface.

Flash off between coats: 30 min to 1 hour.

VIPER PROTECTIVE COATING WHITE

Texture 8: Sharp

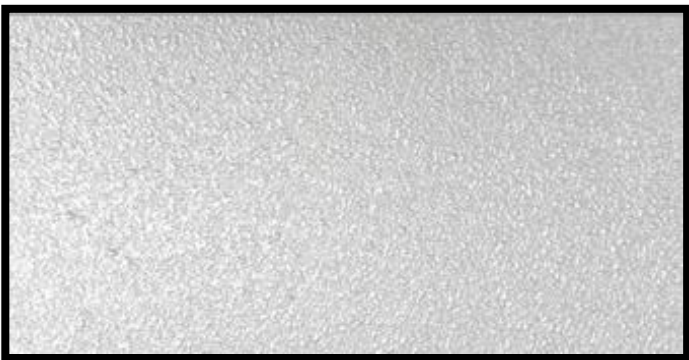


Apply 2 uniform layers with an anti-gravel gun at a high pressure of 5.5 bars, at a distance of 50 - 75 cm from the surface.

Flash off time between coats: 30 min to 1 hour.

Wait 20 - 40 minutes and apply 1 effect layer with an anti-gravel gun at high pressure 5.5 - 7 bars, at a distance of at least 75 cm from the surface.

Texture 9: Standard Semi-Wet



Apply 2 - 3 uniform layers with an anti-gravel gun at an average pressure of 3.5 - 4 bars, at a distance of 30 - 40 cm from the surface.

Wait for 20 - 40 minutes and apply 1 effect layer with an anti-gravel gun at an average pressure of 3.5 - 4 bars, at a distance of 30 cm from the surface.



Curing time: at 20°C

at 60°C

Touch dry: less than 1 hour.

Ready for assembly: 4 hours.

Through dry: 3 - 5 days

30 min.

Complete curing: 2 - 3 weeks after application.

Flash-off: at 20°C

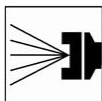
30 - 60 minutes between coats



Recoating: After 24 hours, VIPER Protective Coating can be coated with most paint systems.

If more than 5 days have passed after the application and a re-painting is required, it is recommended to abrade the surface with red Scotch Brite, remove dust, and degrease.

VIPER PROTECTIVE COATING WHITE



Can be applied with anti-gravel gun, HVLP gun, RP gun, roller or brush.

	Nozzle	Pressure
HVLP	1.5 - 2.5 mm	0.7 bar output
TRADITIONAL SYSTEM	1.4 – 2.0 mm	2.0-2.5 bars input
ANTI-GRAVEL GUN		1.5 – 7 bars input



Cleaning: Clean paint equipment with solvent immediately after application.

Equipment cleaning is recommended between coats.



VOC

EU restrictions for this product: VOC (2004/42/CE)

Special coatings, product category IIB(e), max.limit 840g/L

The VOC content of this product is 300 - 310 g/l.

IMPORTANT: FOR PROFESSIONAL USE ONLY.

SAFETY AND HANDLING

Please refer to the Safety Data Sheet for safety precautions and wear personal protective equipment when using this product.

AMAZONA PAINTS S.A.L.

Mailbox: 85 – Zouk Mikael / Lebanon Tel:

+961 9 218 645 - +961 9 218 656

Fax: +961 9 220 215

www.Amazonapaints.com

info@Happywallpaints.com

VIPER PROTECTIVE COATING WHITE

The technical information contained in this Technical Data Sheet should be understood only as a recommendation and is in no way binding.
All details of handling our products must be adapted to the prevailing local conditions and materials used.