

# HAPPY WALL PAINTS

INTERIOR & EXTERIOR

Textured coatings fine and coarse.  
Maplexine and waterproofing coatings  
for protective and decorative applications.

THE BEST OF ALL PAINTS





## TEXTURE COATING AND WATERPROOF

COARSE TEXTURE  
WATERPROOF

W A T E R P R O O F

C O A T I N G

Available with range of colors



SATIN FINISH OR MATT

CTW50..  
WHITE 5000

WHITE 6000

DARK BRICK 6035

LIGHT BRICK 6053



BRICK 535



BROWN 530



GREEN 555



CONCERT 580



BRUT 590



REGAL BLUE 545





**BROKEN WHITE 503**



**BONE WHITE 509**



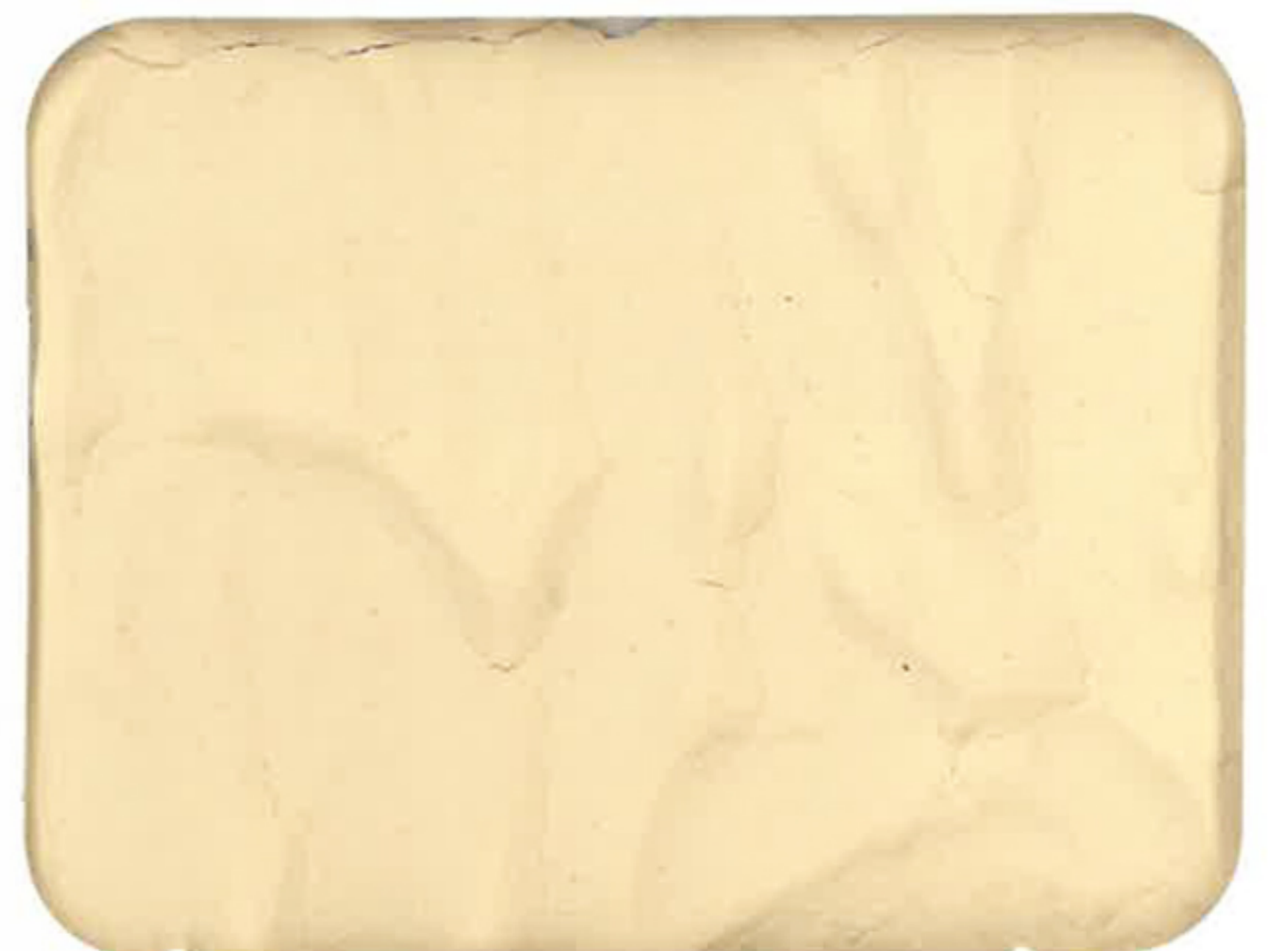
**WHITE 500**



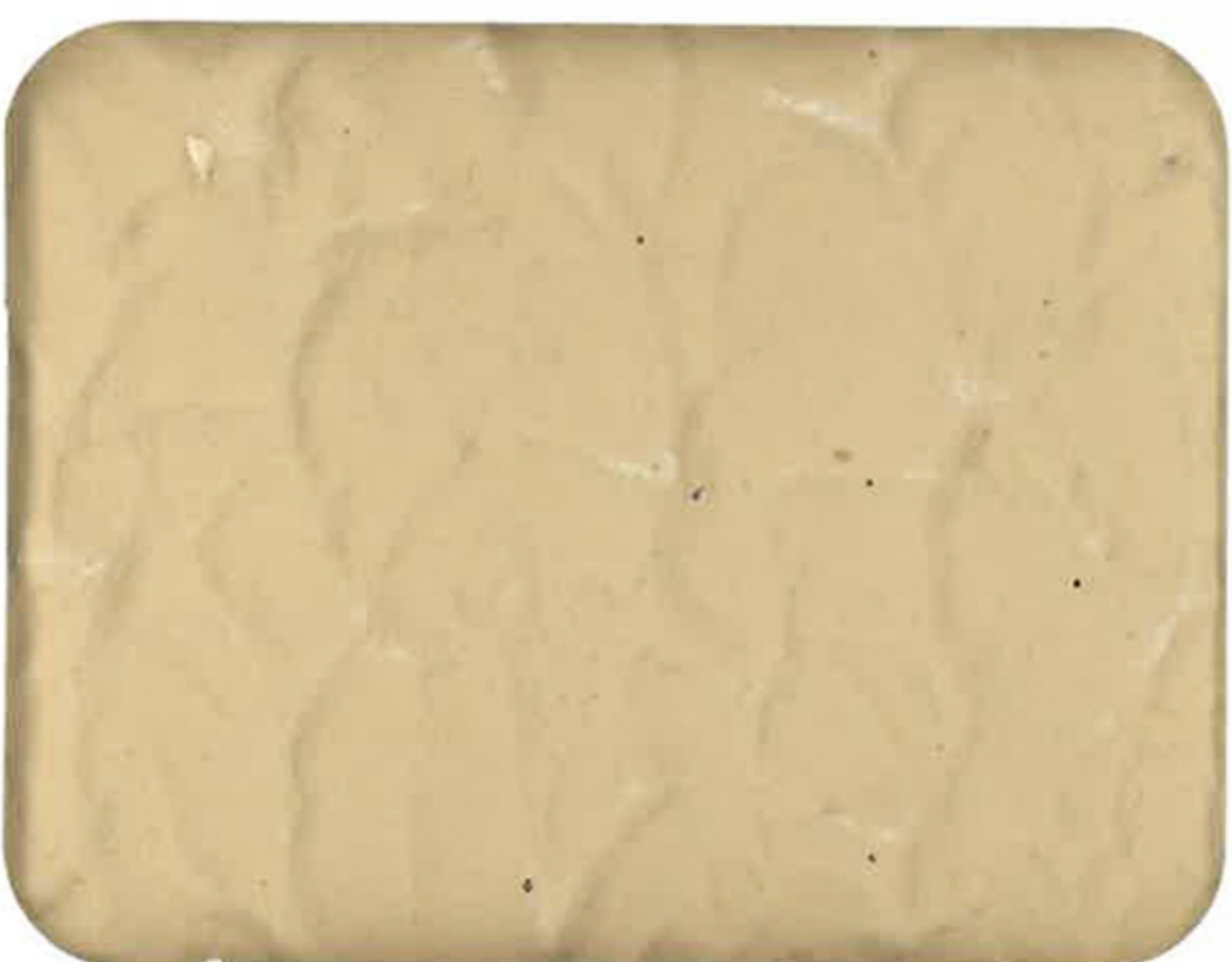
**IVORY 505**



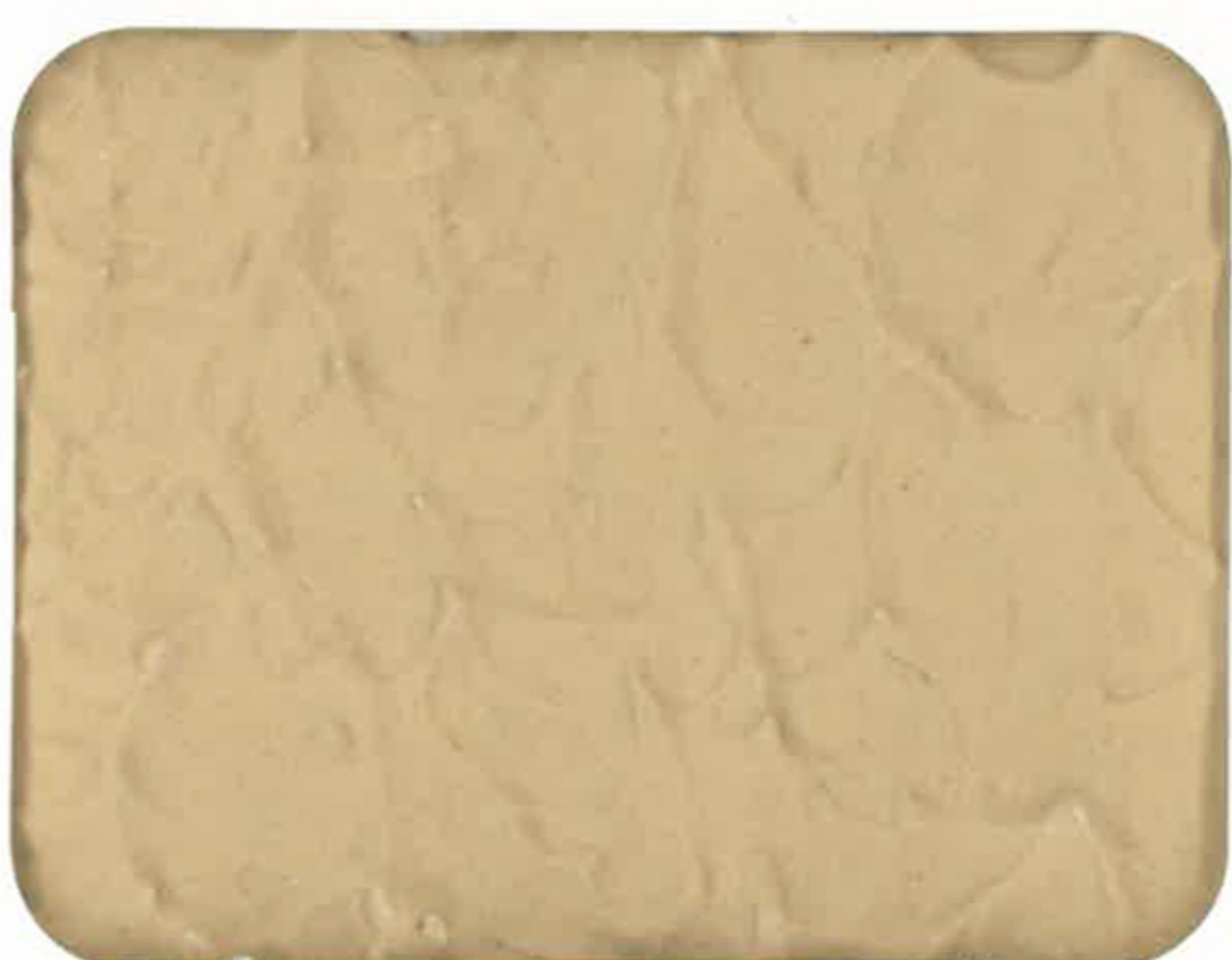
**LIGHT BEIGE 525**



**MAGNOLIA 508**



**MOCHA 570**



**CHAMPAGNE 516**



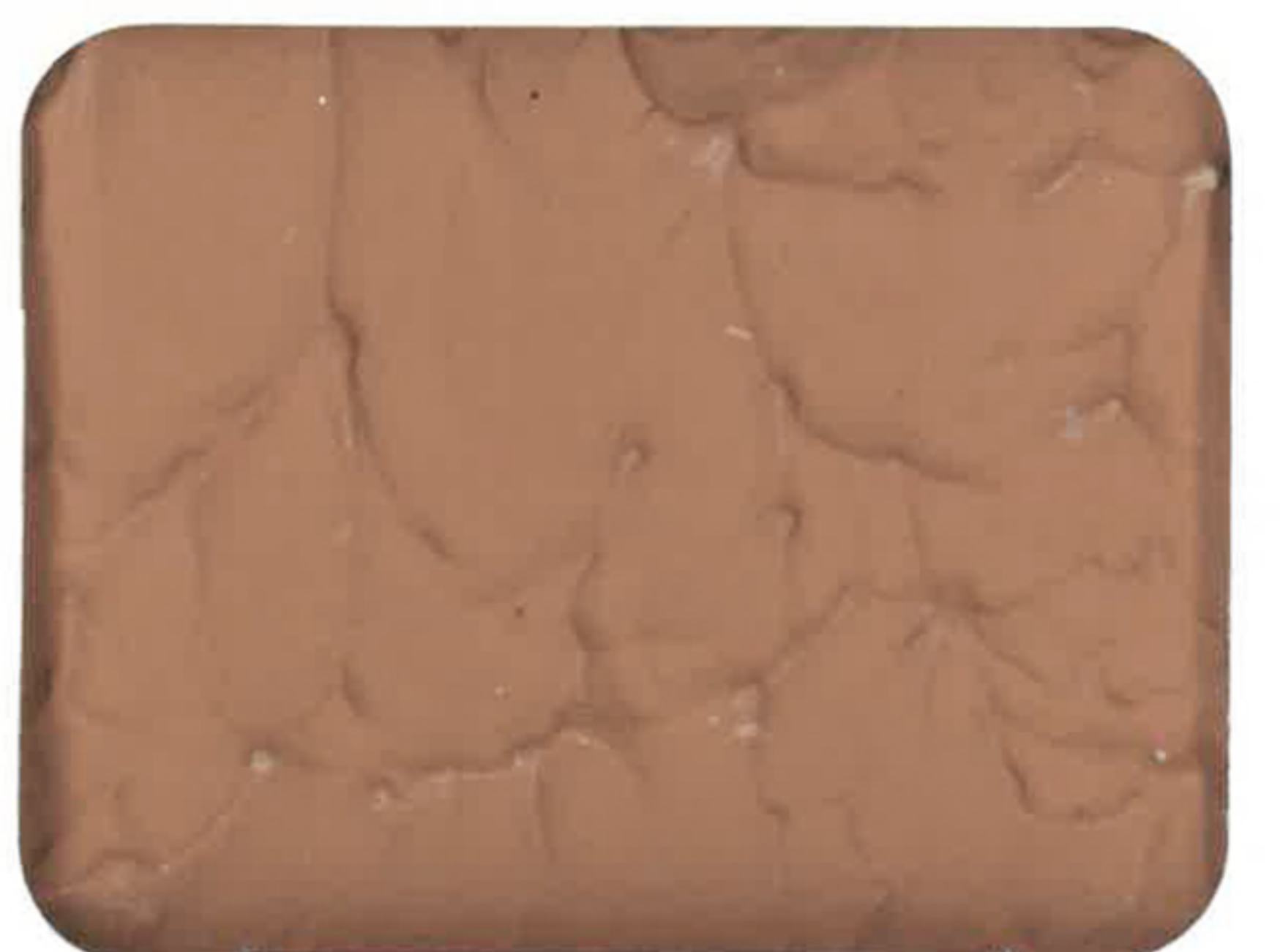
**STONE 513**



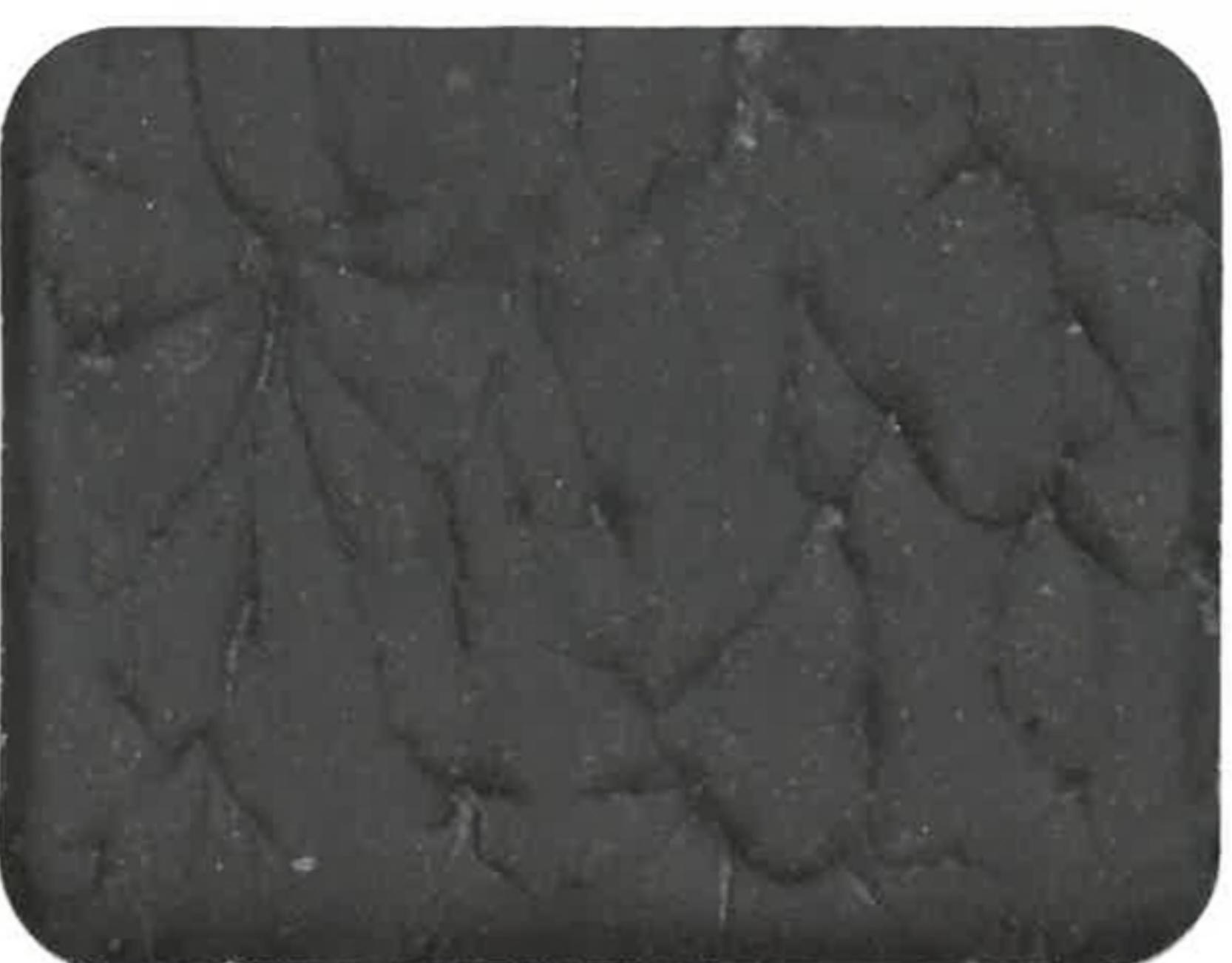
**ISLAND BLUCH 521**



**SAUMON 560**



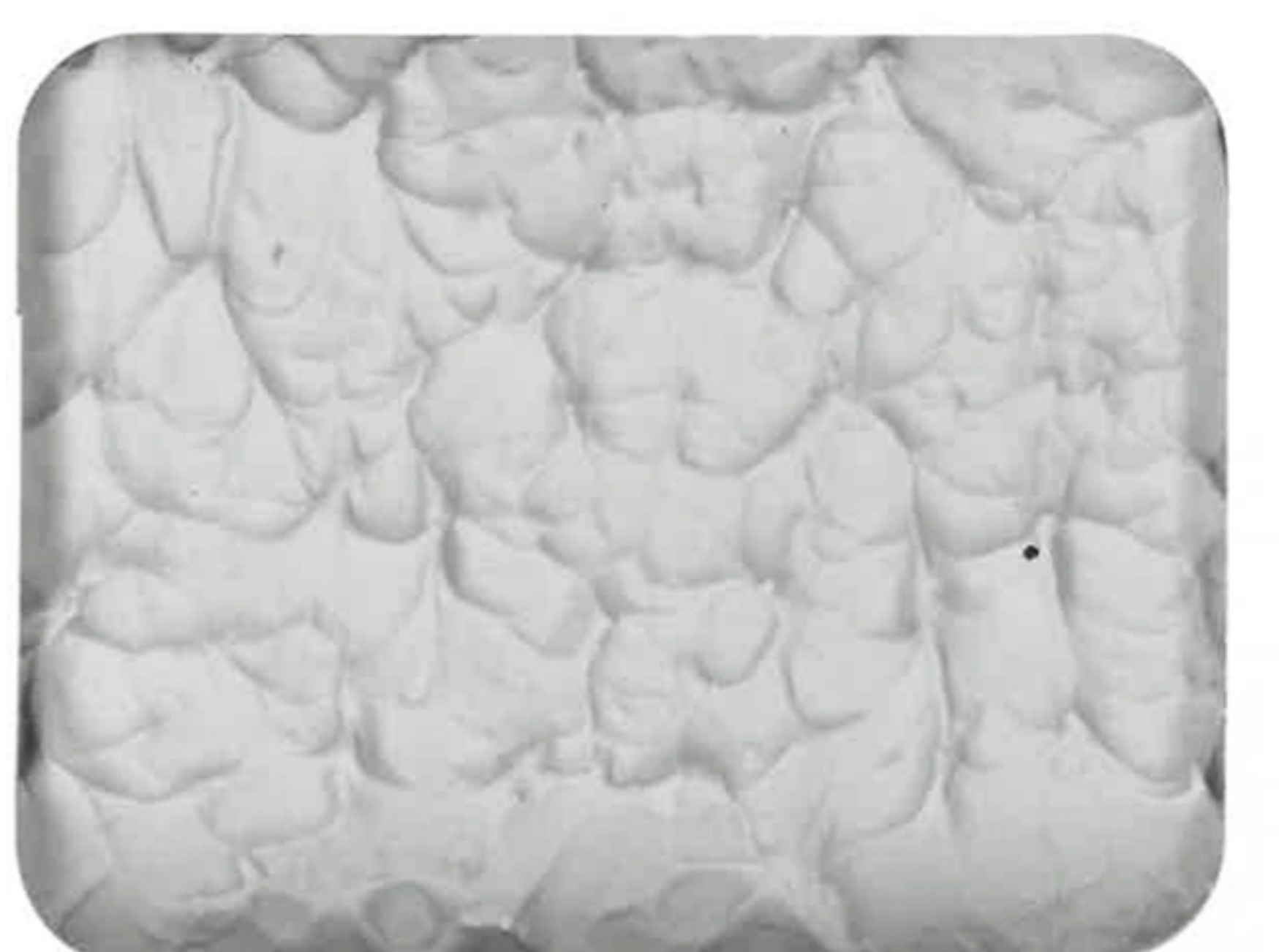
**LIGHT BRICK 553**



**DARK GREY 550**



**PLATINIUM 515**



**LIGHT GREY 507**



**HAPPY WALL** paints were specially developed for interior and exterior masonry, ceilings, fair faced concrete, wall boards, brick, primed or painted wood and metal surfaces...

Prior to application, ensure that all surfaces are solid, clean, dry and free from oil, grease, salt, dirt and other contaminants.

**Textured finishes** are high quality, low-odor and eco friendly water based coatings. They are ready to use and easy to apply with remarkable adhesion and excellent resistance to sunlight and weathering. Available in fine and coarse textured finish.

**Fine Textured** finish coating is free from aggregates.

**Coarse Textured** finish contains coarse quartz aggregates.

**Coarse Texture waterproof** is specially designed for waterproofing applications. It is recommended for exterior surfaces of masonry and is highly resistant to water.

**Scratch** Decorative covering ( **Maplexine** ) is filled with uniform size aggregates (marble quartz) exhibiting a broken scratched effect.

**Gratin, Monocouche with or without Quartz**, provide an ideal decorative finish to precast concrete surfaces. Both are suitable for application on gypsum board and plaster. These products are specially developed for humid areas. They are long-lasting and do not require maintenance.

**Exterior Masonry Paint** Clear or Pigmented ( **EMC or EMP** ), Pliolite resin based. They are specially formulated for all climatic conditions.

**HAPPY - Bond Satin finish waterproofing** is a high quality copolymer based emulsion rendering a high-build smooth coating. It is specially formulated for hot and humid climates.

For full details refer to product technical data sheets or contact us .

## Some of **HAPPY WALL** paints Products

- Latex & Vinyl Emulsion
- Satin finish Vinyl Emulsion
- Water repellent
- Enamel paints , Undercoat
- Metal & Zinc chromate primer
- Hammer & Aluminum paint
- Polyurethane ( sealer, lacquer, primer, paints)
- Nitro Cellulose
- Synthetic , Quick Drying Enamel
- Water Base paints
- Epoxy ( metal , floor , wall , tunnel ...)
- Sealer , Putty & Varnish

