

# HAPPY WALL PAINTS

**Textured coatings fine and coarse.  
Maplexine and waterproofing coatings  
for protective and decorative applications.**

**THE BEST OF ALL PAINTS**



# HAPPY WALL PAINTS

MAPLEXINE



SAUMON 460

GRATIN



PEANUT BUTTER 1333

MONOCOUCHE  
WITH QUARTZ



PINK BEIGE 310



WHITE 300



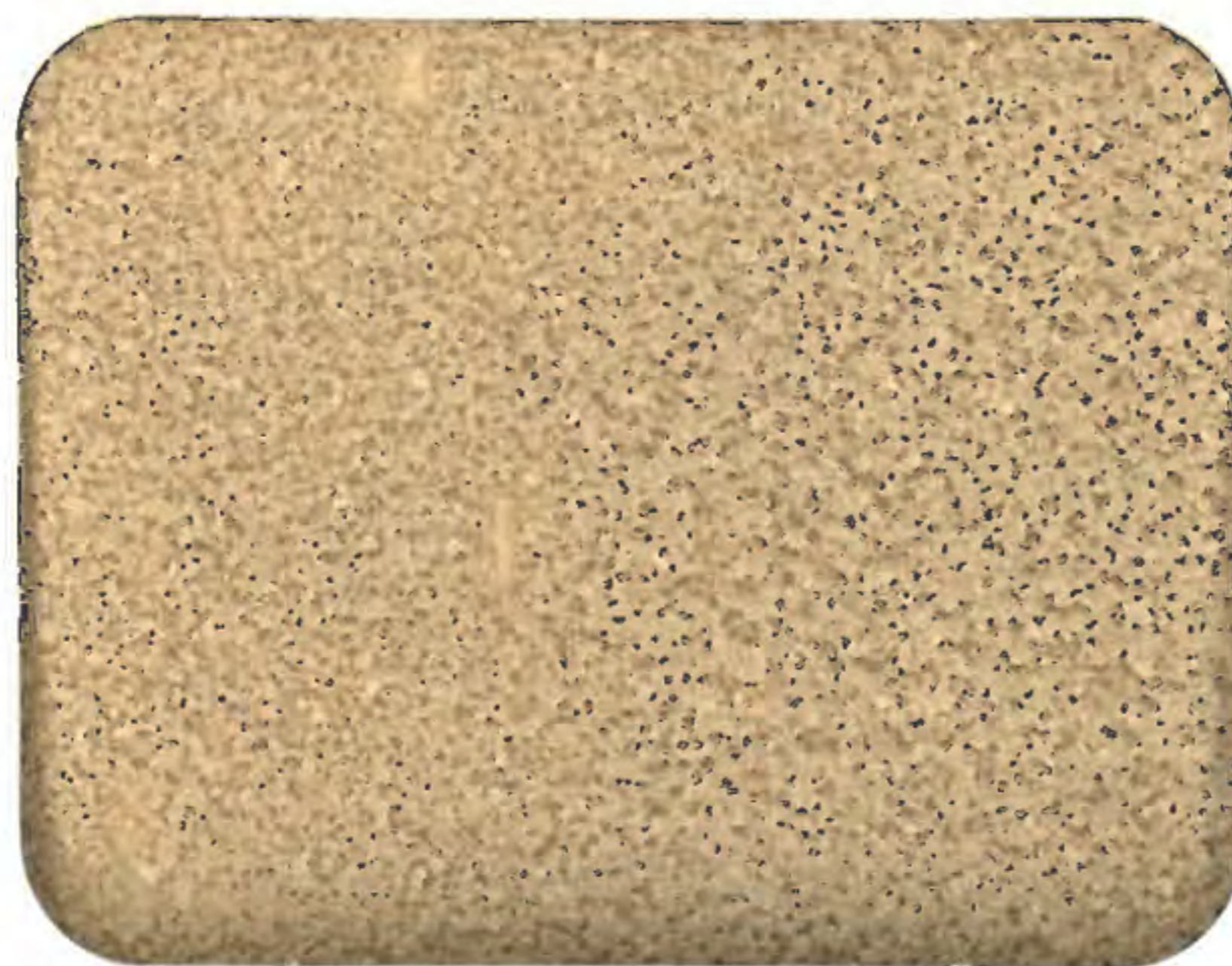
WHITE WASH 304



MAGNOLIA 308



CHAMPAGNE 316



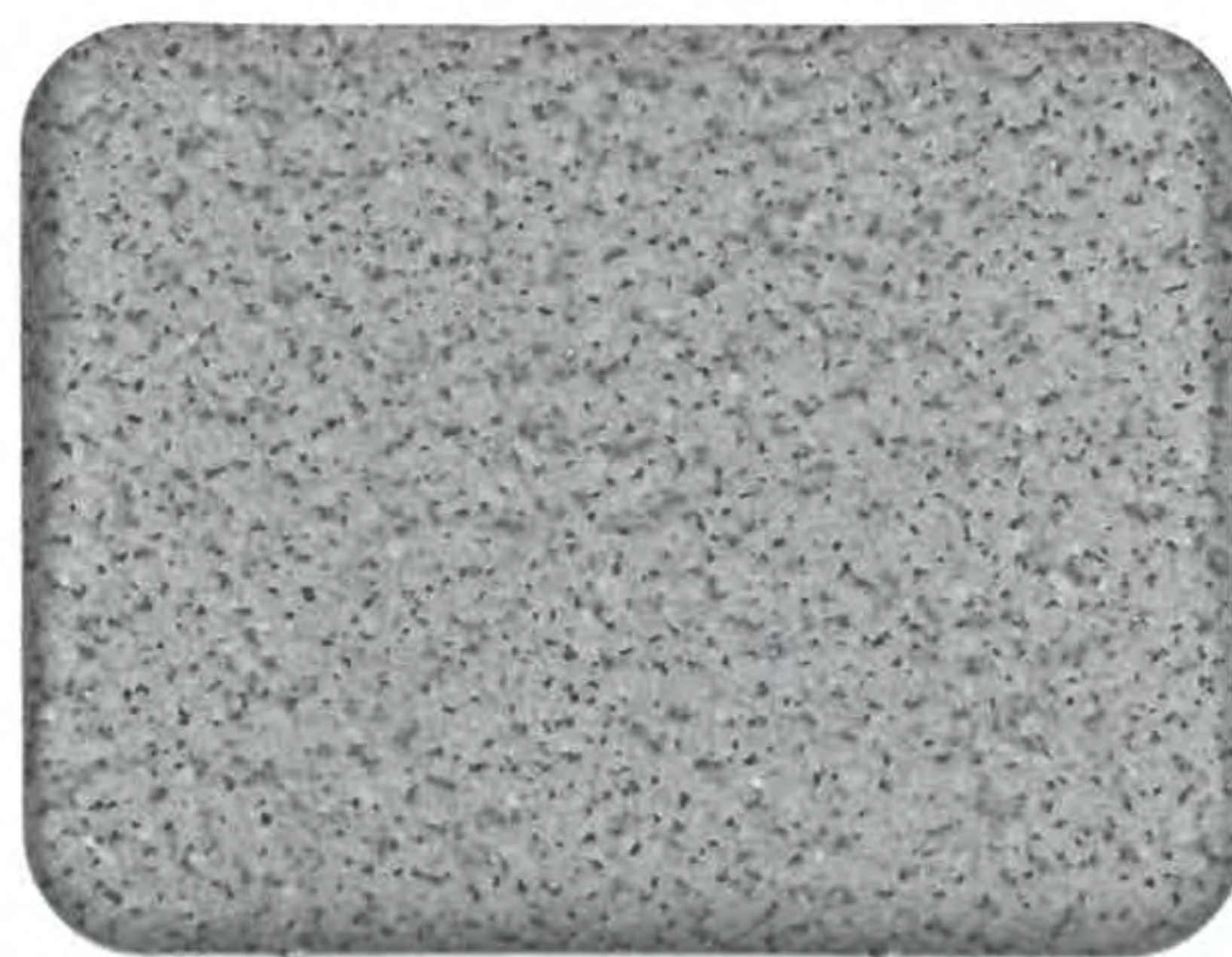
STONE 313



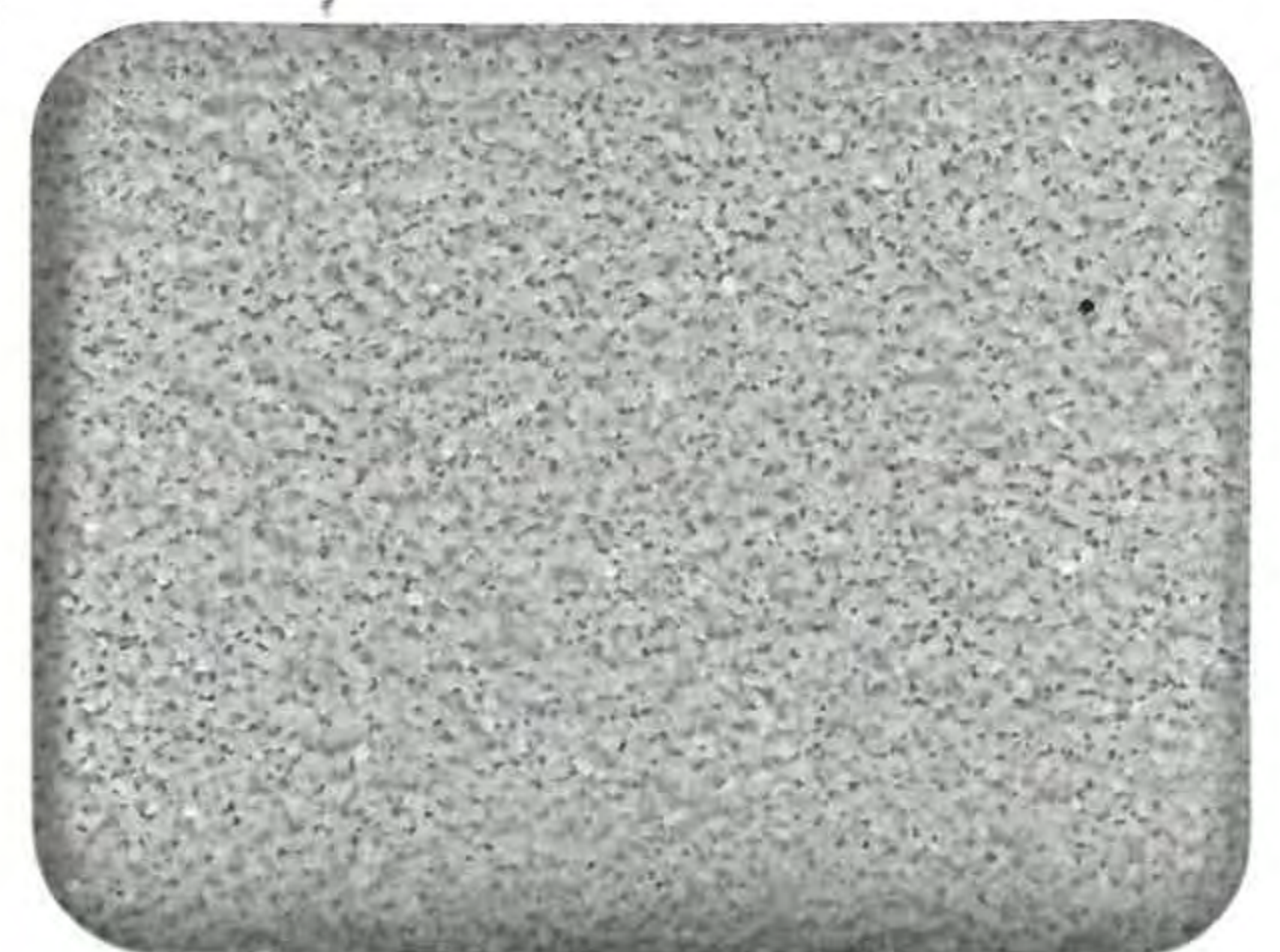
OFF WHITE 340



LEMON TROPICS 305



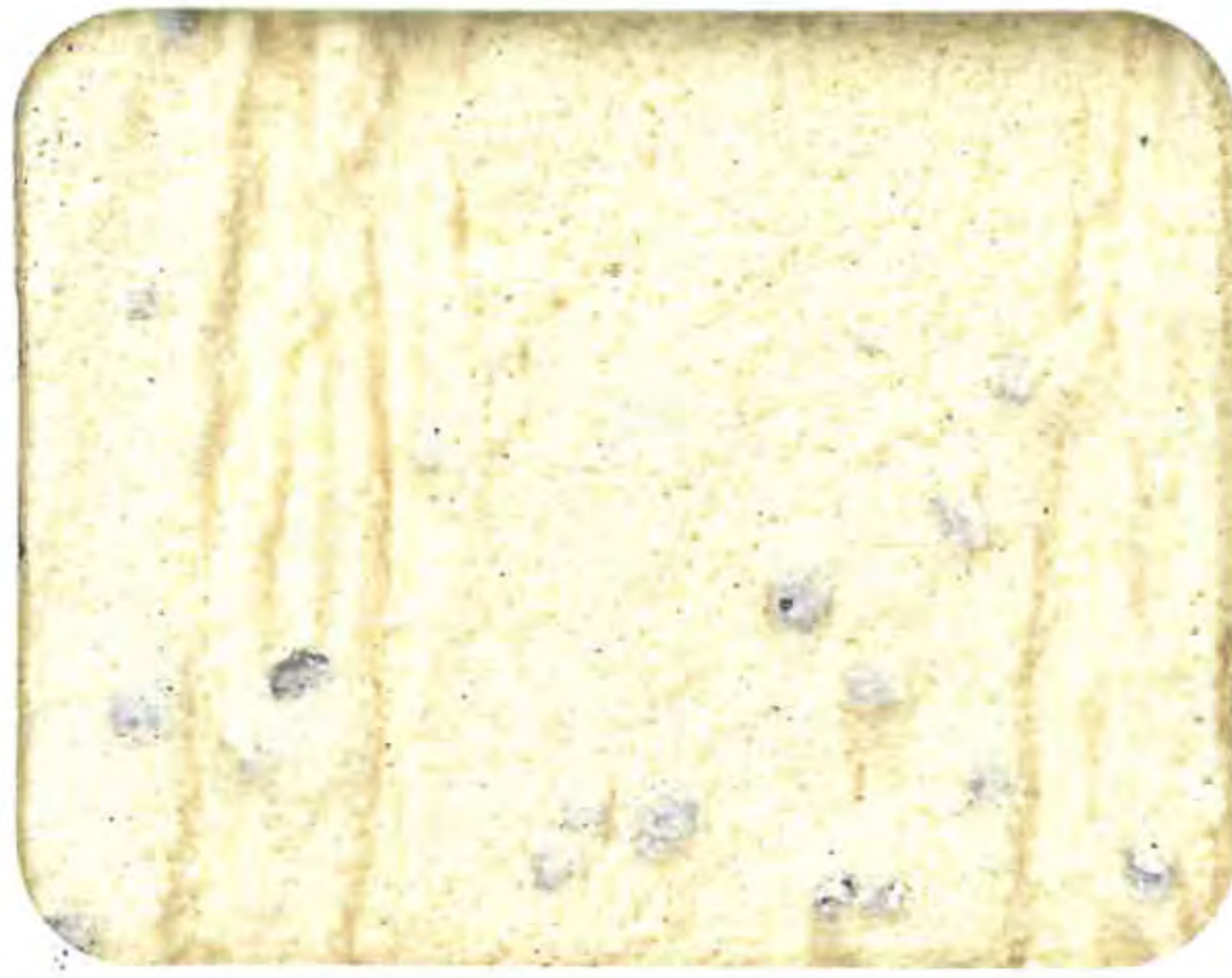
PLATINIUM 315



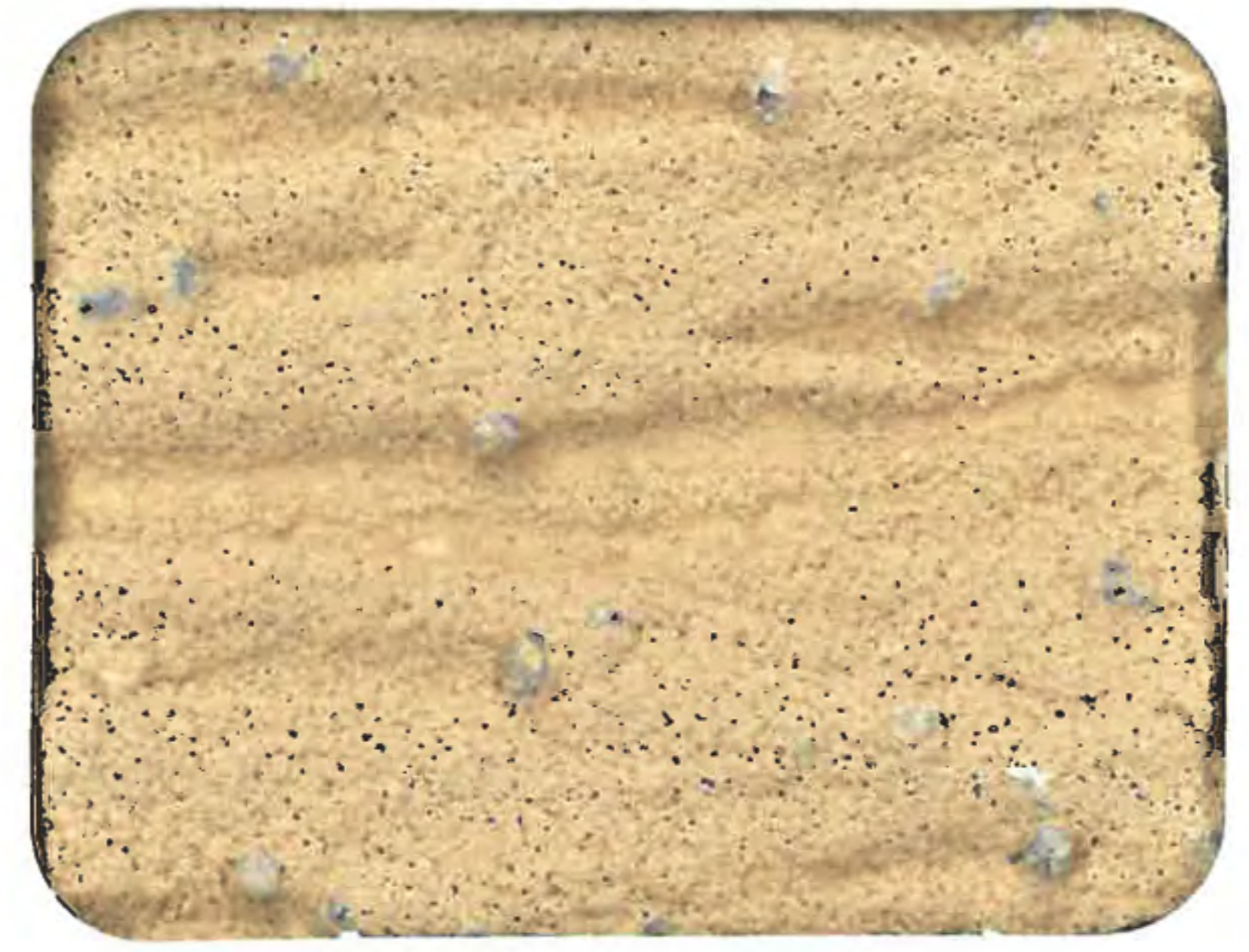
LIGHT GREY 307



**WHITE 400**



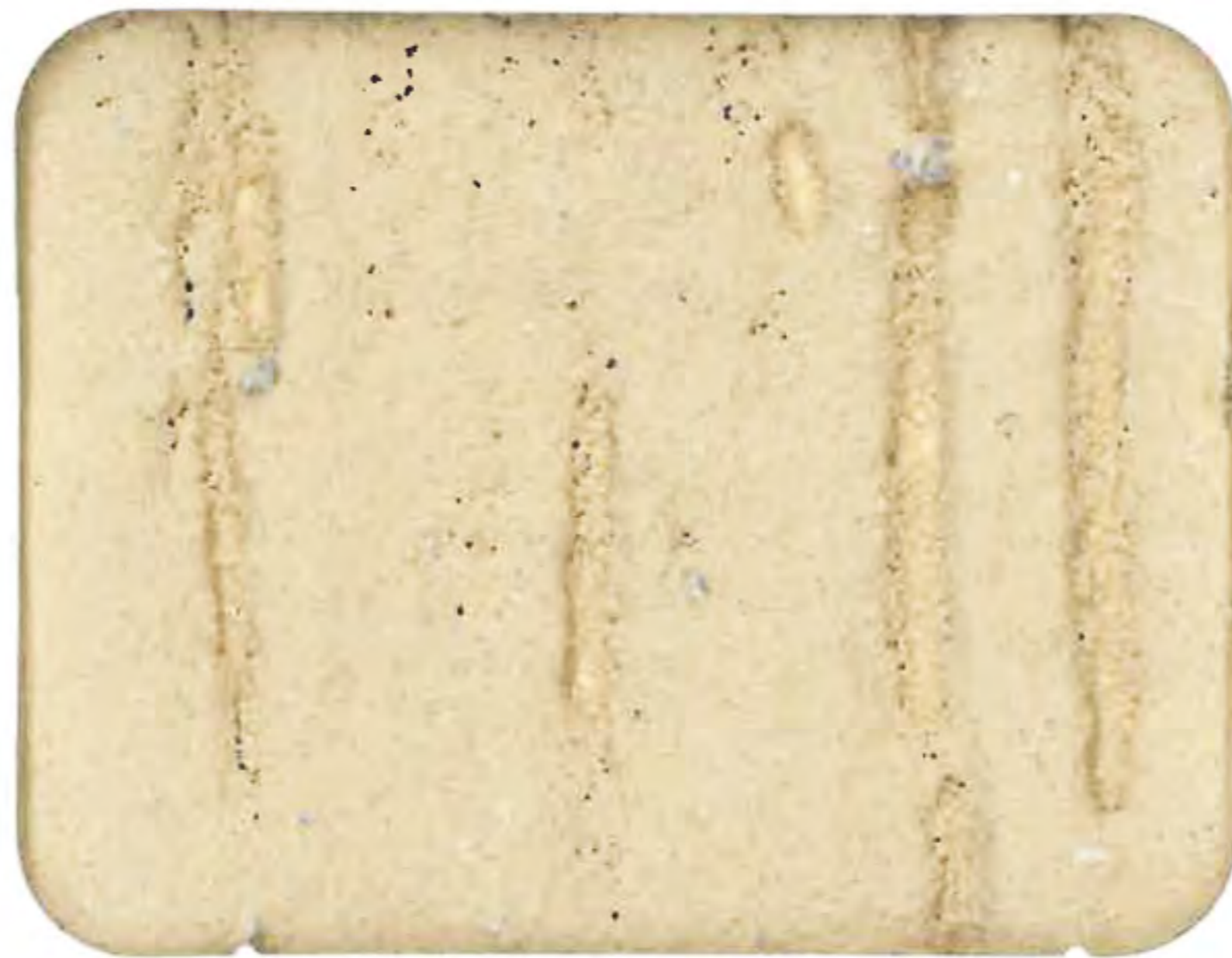
**BONE WHITE 409**



**MAGNOLIA 408**



**CHAMPAGNE 416**



**MOCHA 470**



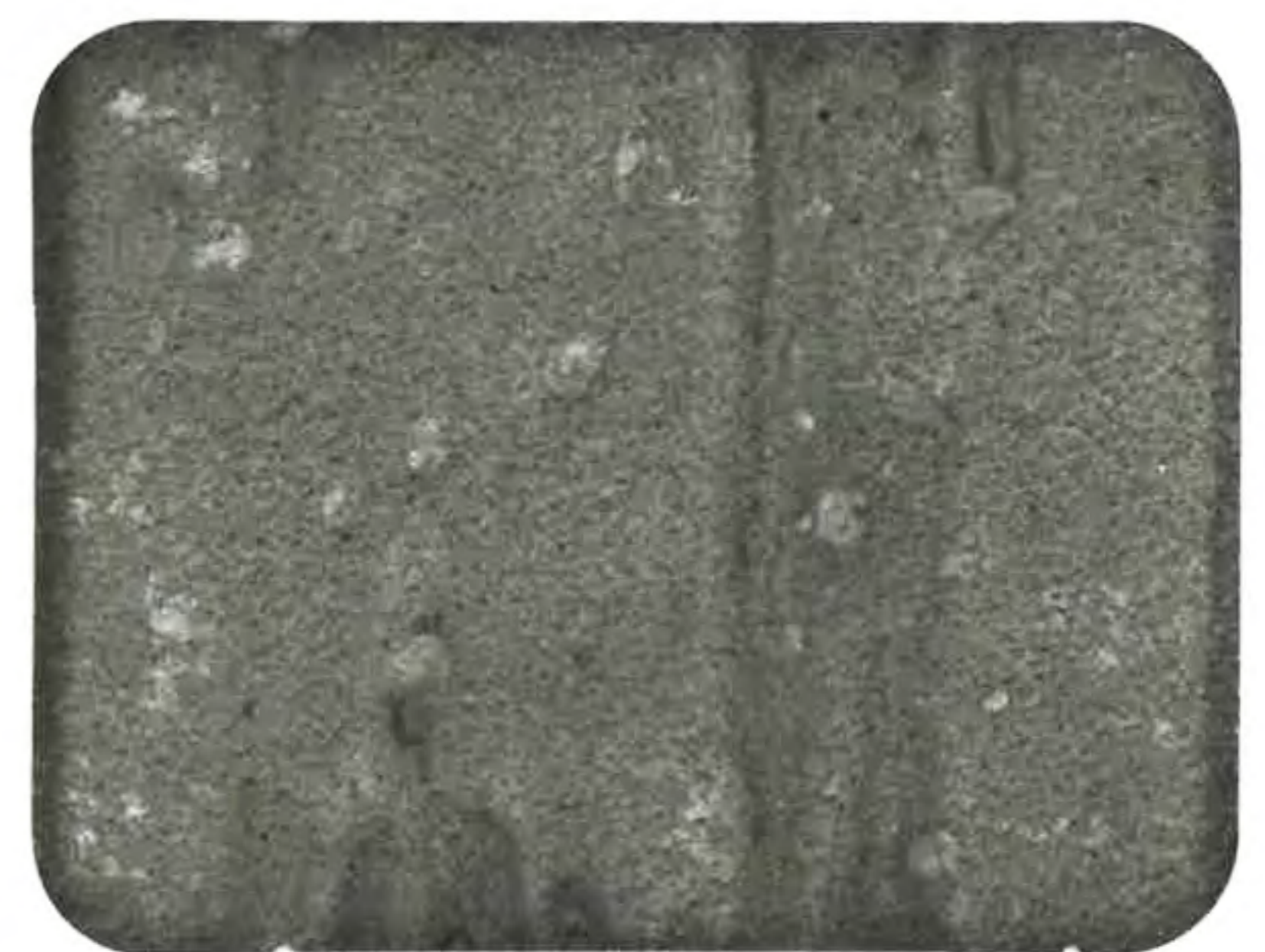
**OFF WHITE 440**



**GREY 420**



**BRICK 435**



**BRUT 490**



**GREEN 355**



**LIGHT BRICK 353**



**ISLAND BLUSH 321**



**REGAL BLUE 345**



**GOLD CUP 303**



**LAVENDER 331**

# HAPPY WALL PAINTS

**HAPPY WALL** paints were specially developed for interior and exterior masonry, ceilings, fair faced concrete, wall boards, brick, primed or painted wood and metal surfaces...

Prior to application, ensure that all surfaces are solid, clean, dry and free from oil , grease , salt , dirt and other contaminants.

**Textured finishes** are high quality, low-odor and eco friendly water based coatings. They are ready to use and easy to apply with remarkable adhesion and excellent resistance to sunlight and weathering. Available in fine and coarse textured finish.

**Fine Textured** finish coating is free from aggregates.

**Coarse Textured** finish contains coarse quartz aggregates.

**Coarse Texture waterproof** is specially designed for waterproofing applications. It is recommended for exterior surfaces of masonry and is highly resistant to water.

**Scratch** Decorative covering ( **Maplexine** ) is filled with uniform size aggregates (marble quartz) exhibiting a broken scratched effect.

**Gratin, Monocouche with or without Quartz**, provide an ideal decorative finish to precast concrete surfaces. Both are suitable for application on gypsum board and plaster. These products are specially developed for humid areas.

They are long-lasting and do not require maintenance.

**Exterior Masonry Paint** Clear or Pigmented ( **EMC or EMP** ) , Pliolite resin based. They are specially formulated for all climatic conditions.

**HAPPY - Bond Satin finish waterproofing** is a high quality copolymer based emulsion rendering a high-build smooth coating. It is specially formulated for hot and humid climates.

For full details refer to product technical data sheets or contact us .

## Some of **HAPPY WALL** paints Products

- Latex & Vinyl Emulsion
- Satin finish Vinyl Emulsion
- Water repellent
- Enamel paints , Undercoat
- Metal & Zinc chromate primer
- Hammer & Aluminum paint
- Polyurethane ( sealer, lacquer, primer, paints)
- Nitro Cellulose
- Synthetic , Quick Drying Enamel
- Water Base paints
- Epoxy ( metal , floor , wall , tunnel ...)
- Sealer , Putty & Varnish

